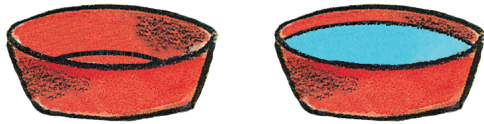


ANIMAL OPPOSITES

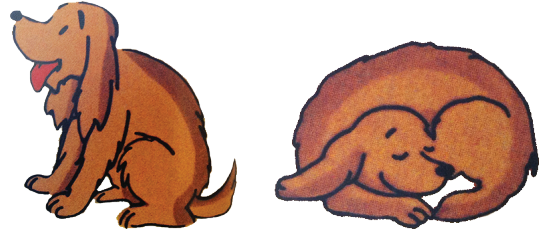
Fill in the correct opposite. Use the word box for help.

What's the opposite of **empty**?



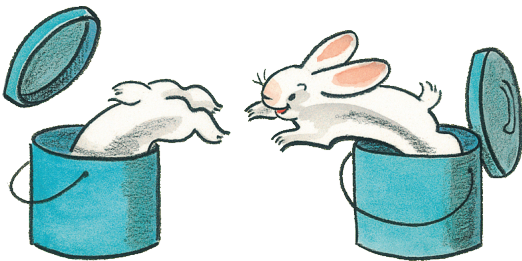
empty _____

What's the opposite of **awake**?



awake _____

What's the opposite of **in**?



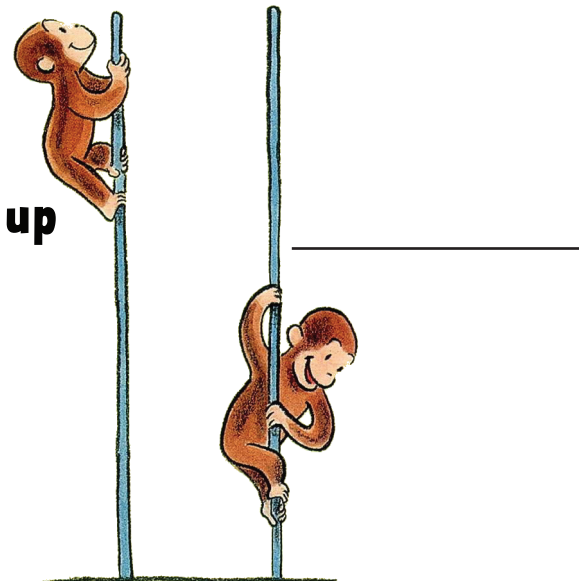
in _____

What's the opposite of **big**?



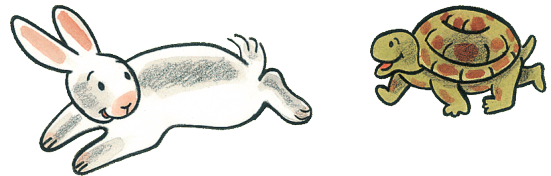
big _____

What's the opposite of **up**?



up _____

What's the opposite of **fast**?



fast _____

